

## Tin Can Mobile

Tin Can Mobile can be used to recycle materials as well as display themes such as characters, shapes, animals in the state, birds in the state, rainy season activities, dry season activities, or a variety of other concepts. Use a straight stick, branch or metal rod to hang cans. Hang mobile.

### Materials:

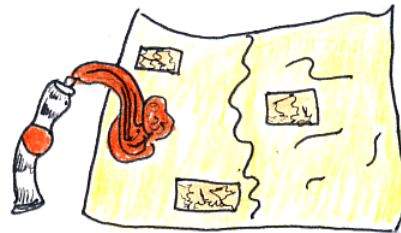
- tin cans from soup, milk, coffee, and so on
- can opener
- masking tape or duct tape, string or wire
- acrylic paints
- newspaper
- sponge cut into small pieces
- bucket of water
- straight stick, branch or metal rod

### Directions:

1. Peel off labels from tin cans. Remove ends with a can opener. Tape over sharp edges with masking tape or duct tape.



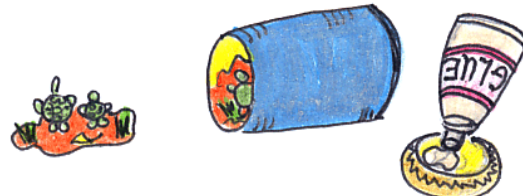
2. Put newspaper on flat surface. Squeeze acrylic paint onto newspaper.



3. Moisten sponge pieces in water; dip into acrylic paints. Dab color onto cans. Dry.



4. Insert small scenes or characters from a story inside cans; paste the scenes in place.



5. Put heavy wire or string through each can.



6. Attach cans to stick, branch or rod. Hang-up mobile.

